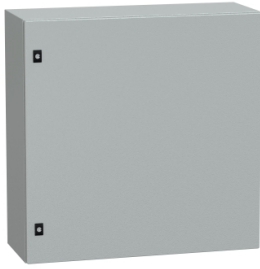


Product datasheet

Specifications



Spacial CRN plain door with mount.plate. H800xW800xD300 IP66 IK10 RAL7035..

Local distributor code:

400941248

NSYCRN88300P

EAN Code: 3606480211720

Main

Range	Spacial
Product Name	Spacial CRN
Application	Multi-purpose
Category	Compact enclosure
Enclosure Nominal Height	800 mm
Enclosure Nominal Width	800 mm
Enclosure Nominal Depth	300 mm
Installation Accessory Type	Wall-mounting
Device Composition	1 body 1 door with lock 1 mounting plate 2 cable gland plate: bottom
Door Type	Plain
Mounting Plate Description	Plain

Complementary

Body Type	Back welded with double profile forming a protected sealed area Sides made from a single folded section
Number Of Doors	Front face: 1 door(s)
Door Opening Side	Reversible (120 °)
Lock Type	3 mm double-bar lock
Type Of Gland Plate	Standard
Accessibility For Operation	Front
Removable Parts	Door by hinges Cable gland plate by screws Mounting plate by fixing element
Material	Enclosure: steel Mounting plate: galvanised steel
Surface Finish	Enclosure: epoxy-polyester powder
Colour	Enclosure: grey (RAL 7035)
Standards	IEC 62208
Product Certifications	cUL UL DNV-GL
Net Weight	37 kg

Environment

Ip Degree Of Protection	IP66 conforming to IEC 60529
-------------------------	------------------------------

Ik Degree Of Protection	IK10 conforming to IEC 62262
-------------------------	------------------------------

Packing Units

Unit Type Of Package 1	PCE
------------------------	-----

Number Of Units In Package 1	1
------------------------------	---

Package 1 Height	31.500 cm
------------------	-----------

Package 1 Width	81.000 cm
-----------------	-----------

Package 1 Length	81.500 cm
------------------	-----------

Package 1 Weight	36.241 kg
------------------	-----------

Unit Type Of Package 2	PAM
------------------------	-----

Number Of Units In Package 2	8
------------------------------	---

Package 2 Height	180.000 cm
------------------	------------

Package 2 Width	100.000 cm
-----------------	------------

Package 2 Length	120.000 cm
------------------	------------

Package 2 Weight	302.928 kg
------------------	------------

Contractual warranty

Warranty	18 months
----------	-----------

Sustainability

Green Premium™ label is Schneider Electric's commitment to delivering products with best-in-class environmental performance. Green Premium promises compliance with the latest regulations, transparency on environmental impacts, as well as circular and low-CO₂ products.

Guide to assessing product sustainability is a white paper that clarifies global eco-label standards and how to interpret environmental declarations.

[Learn more about Green Premium >](#)

[Guide to assess a product's sustainability >](#)



Transparency RoHS/REACH

Well-being performance

Mercury Free

RoHS Exemption Information Yes

Certifications & Standards

Reach Regulation [REACH Declaration](#)

Eu RoHS Directive Pro-active compliance (Product out of EU RoHS legal scope)

China RoHS Regulation [China RoHS declaration](#)
Product out of China RoHS scope. Substance declaration for your information

Environmental Disclosure [Product Environmental Profile](#)

Circularity Profile No need of specific recycling operations